



# Connectivity Solutions

Complete or Partial Part #,  
Competitor Part # or  
Keywords.

Wireless

CATV

Audio &amp; Video

Networking &  
Structured Wiring

Military &amp; Aerospace

Test &amp; Measurement

Home

Member Access

Products

Connectors

Microwave Components

CATV Components

Coaxial Cable Assemblies

Structured Cabling &amp; Connectors

Tools &amp; Accessories

Customer Service

Request For Quote

Representatives

Distributors

Literature/Catalog Request

What's New

About Our Brands

Legal Terms

© 2007 All Rights Reserved

## Product Detail



<b>Product Line:</b>	<a href="#">Johnson</a> (Click for customer service)
<b>Part Number:</b>	108-0303-001
<b>Description:</b>	Banana Plug - Insulated Solderless Tapered Handle
<b>Product Family:</b>	BANANA PLUG
<b>Body Material:</b>	Brass per QQ-B-626D
<b>Breakdown Voltage:</b>	3500 Vrms min.
<b>Color / Finish:</b>	Black
<b>Contact Finish:</b>	Nickel
<b>Contact Termination:</b>	Solder
<b>Current:</b>	15 amps
<b>Desc 2:</b>	Tapered Handle
<b>Description:</b>	Insulated Solderless
<b>For Use With:</b>	.166 (4.23) Banana Jack
<b>RoHS Compliant:</b>	Yes

20070523-1523

# Banana Plug - Insulated Solderless Tapered Handle

## SPECIFICATIONS

**Plug Body:** Brass per QQ-B-626D

**Plug Spring:** Nickel silver per QQ-C-533

**Finish:** Nickel

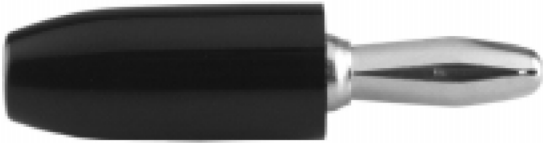
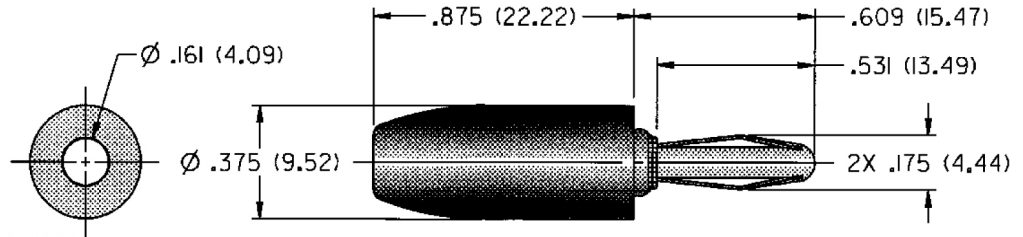
**Insulated Handle:** Nylon 6/6 per ASTM D4066

## RATINGS

**Current:** 15 amps

**Breakdown Voltage:** 3500 Vrms minimum =

**Contact Resistance:** 0.010 ohms maximum



### NICKEL PLATING

108-0303-001 Black

**For Standard Banana Jack: .166 (4.23) Diameter**

## FEATURES:

- Fast solderless connection of up to 16 gauge wire
- Recessed plug body to limit shock hazard
- Nylon UL approved for self extinguishing